
OPPORTUNITIES THIS WEEK

Various small groups/Bible studies are available through the week – just ask for details

TODAY: Sunday School 9:30 AM
Morning Worship Service -Pastor Tim Shafer 10:45 AM

WEDNESDAY: Alliance Youth Fellowship 6:30 PM

SUNDAY: Sunday School 9:30 AM
Morning Worship Service – Rev Rob Hill 10:45 AM

For the morning worship service
Go online/live to....
“Huntingdon CMA Church” Facebook Page
OR www.huntingdoncma.org
& select “LIVE STREAM”

The Christian Missionary Alliance Church



August 8th, 2021

*Together, we will glorify God
and make disciples by sharing the
love of Jesus with the world.*

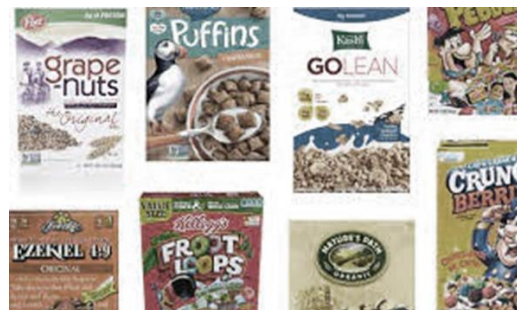
Senior Pastor – Rev. Rob Hill
robhill@huntingdoncma.org

1019 Moore Street
Huntingdon, PA 16652
Church Office: (814) 643-5310
Email: office@huntingdoncma.org
Website: www.huntingdoncma.org

Confidential Prayer Email:
prayer@huntingdoncma.org

<https://www.facebook.com/HuntingdonCMA>

AUGUST Food Bank
Item: Boxes of
***Healthy* Breakfast**
Cereal



Thank you for your donations of
Jello/Pudding and \$355!

Copies of the JUNE Governing Board minutes & Treasure Reports
are available in the foyer area near the church office.

August Prayer Focus 10/40 Window - Mauritania



Made up entirely of Sahara desert and bordering the Senegal River, Mauritania comes from the Latin word "Mauretania", which means "west." The African nation was founded to create an alliance between France and the Arab-Berber theocracy and to connect French black West African colonies with Algeria in the north. Mauritania became independent from France in 1960 and is now a multi-party democracy under the 2006 constitution.

Mauritania has many rich fishing zones along the Atlantic coast, but the nation is not self-sufficient. It is both one of the least industrialized nations and one of the largest recipients of foreign aid in the world, though the recent discovery of oil may in time bring wealth to the nation.

Mauritania must overcome huge economic and social challenges. One-third of children lack enough food to eat, and widespread divorce leads to many social problems. Only about 1% of the land can be farmed, and even that decreases as farmland becomes desert.

Islam has been entrenched for 1,000 years with little challenge. Many are the barriers to change - laws hindering proclamation of the gospel, powerful social resistance to change, an historic reluctance to engage with the outside world, geographical isolation, low literacy and minimal exposure to Christians and Christian media.

There are only a handful of Christians among this entire people, but we see a new day of growth and witness among the Saharawi through low-key mission work and national believers. There are openings for ministry to refugees through relief and development, and difficult political and living conditions lead to considerable openness.

Announcements

*Call To Worship

*Worship Through Singing

Goodness of God
Living Hope
Grave Into Gardens

Offertory

*Worship Through Singing

Hymn #453 - O Perfect Love

Scripture Reading

Psalms 78:1-8

Pastoral Prayer

Message

The View Part 2

Pastor Tim Shafer

*Closing Hymn

Hymn #437 - O Lord, My Church and Home

*Please stand as you are able



Nursery Today:

Gwen Culbertson

Please contact Gwen Culbertson or the Church Office if you would like to volunteer as a worker

Next Sunday:

Gwen Culbertson

RECEIVED LAST WEEK		ACCUMULATED TOTAL	
[Weekly General Fund Budget(planned)]	\$ 3,945.71]		
General Fund (received)	\$ 4,133.68		
Building Fund	\$ 624.00	Building Fund	\$118,844.71
Other Funds	\$ 350.00		
Great Commission Fund	\$ 928.00	Great Commission Fund	\$ 34,716.59
		Great Commission Year-End Offering	\$ 990.00
Other Missions	\$ 646.00	Great Commission Sunday Offering	
Total Giving	\$ 6,681.68		

ADULT SENIORS 55 or older... Attention Seniors!

TUESDAY 08/10/2021 Detwiler Field WALKING 8:00 AM

Weather permitting



Contact person: Ruth Scalia
by email or phone: rscaliam316@comcast.net
or text my phone (814) 386-9530

CMA MEMBERSHIP

Thinking about membership?
Or, you're not sure what the
Christian & Missionary Alliance
Church is all about?

Beginning **August 15th, at 9:30 am** (yes...during Sunday School), we will begin an 8-week journey discovering the CMA DNA.

If you are interested, please sign up in the foyer.

If you have any questions, please contact Pastor Rob at robhill@huntingdoncma.org. Class will run August 15th-October 10th and we will meet in the conference room!

AYF YOUTH Snacks Needed

Bottled Water / Flavored Water / Juice Boxes / Capri Sun / etc
Fruit Cups / Chips, Pretzels. Pre-packaged are much appreciated!

Thanks for your generosity!

Please deliver items to the Youth Room #203 on the 2nd floor.



ANNOUNCEMENTS



WHO WILL YOU CALL THIS WEEK?

Who will you call to be an encouragement and build up the body of Christ?

WELCOME VISITORS

We are grateful you have decided to worship with us. Would you take a moment after the service and find Pastor Rob and introduce yourself? He will find a visitor information card for you to fill out. He might even invite you out for lunch.

Good to have you here!

BAPTISM AND SUNDAY SCHOOL ANNUAL PICNIC 2021



Mark your calendar!

The Sunday School Picnic will be held on Sunday, August 22, 2021 at the Portstown park Pavilion. Please bring a main dish and a salad or dessert.

We will provide pulled pork, hot dogs, rolls, baked beans, as well as place settings and drinks.

Come at 4:00 for games, we will plan to eat around 5:00 PM. Bring a chair and see you there! *Also, we will include a baptismal service, so if you have never been baptized and would like to be, please talk to Pastor Rob.*

“THE VIEW” part 2



3. THE VIEW of _____

Home (Ephesians 5:21-6:4)

Government (Romans 13:1-7)

Business (Ephesians 6:5-9)

Church (Titus 2:15; 1 Thessalonians 5:12;

1 Timothy 5:17; Hebrews 13:7)

Luke 2:41-52

_____ grew in... **Wisdom**

Stature

Favor with Man

Favor with God

4. _____ **YOUR VIEW**

Read the Bible with these questions in mind:

Who Is God

What Does God Do

What Does God say about ME

What are the...

Precepts, Principles, Promises, and Purposes God reveals

BEGINS SEPT 9 | 7:00 -8:30 pm | HCMA

(EVERY THURSDAY FOR 6 WEEKS)

This last year has been one marked by loss of life, jobs, relationships, and for some – hope. And because of this, the Lord impressed upon my heart to offer a place where those who have suffered loss can journey together and support each other toward healing and wholeness.

We will use the material ‘**Why, What If, If Only**’ from Grief Care Fellowship. Though this material is geared toward the loss of life, I believe these tools will bring healing and comfort to all kinds of loss. This 6-week video-based curriculum is designed to respond to the common questions:

- Why is this happening to me?
- Was it my fault?
- God, why did you allow this?
- Is there hope beyond today?
- Will I ever be able to live life again?

Join us every Thursday beginning on Sept. 9 from 7:00-8:30 pm to support one other and learn how to navigate life again. Unfortunately, loss has a ripple effect and affects the entire family, so please invite your loved ones to join you on this journey.

Please RSVP by Aug. 19 if you plan to attend.

For questions, please contact Janie Hill at wreckedbykindness@gmail.com or call/text to 360-580-2389.